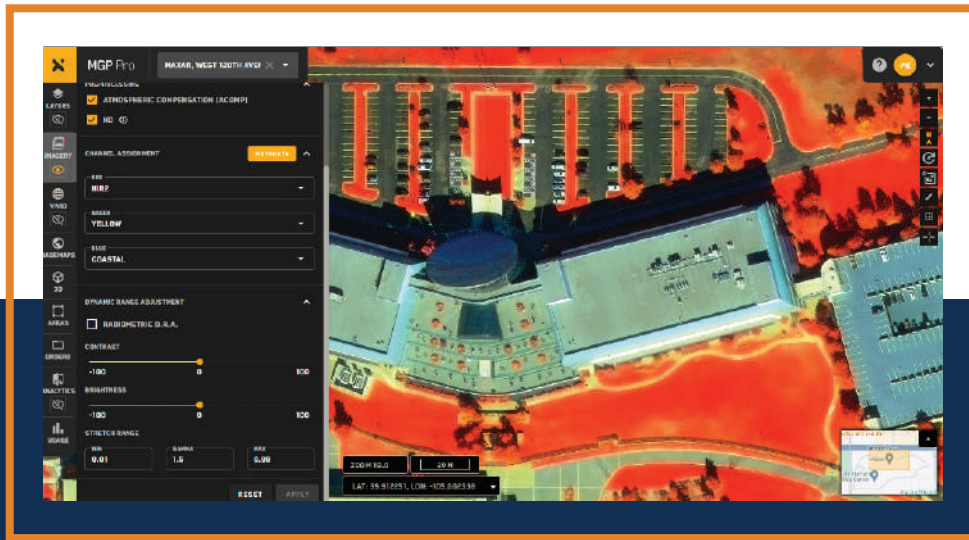


MGP Pro

From Maxar Technologies

Imagery access on your terms

Maxars's MGP Pro is the premier, cloud-based subscription platform for secure and timely access to Earth Intelligence. With a broad range of imagery and geospatial data products, MGP Pro provides unrivaled coverage, quality and flexibility. MGP Pro subscribers can access over 3 million square kilometers of daily image collections, plus more than 6 billion sq km of archived imagery at up to 30 cm resolution.



GLOBAL COVERAGE

You define your areas of interest from our available global coverage including more than 6,000 world capitals and metropolitan areas in 30 cm resolution.



PREMIUM IMAGERY

Access the highest quality imagery in resolution, accuracy, and currency. View a highly aesthetic mosaic or see change over time with access to our historical archive.



SUBSCRIPTION PRICING

Available at multiple pricing levels based on data consumption or streaming seats



CLOUD ACCESS

Search and download/stream the data you need, when you need it; easily share with others in your organisation or integrate into your existing workflow and applications.

Specifications

ELECTRO-OPTICAL	Maxar's WorldView-4, 3, 2, 1, GeoEye-1, QuickBird, and enriched third-party sensor data
API DISCOVERY & ORDERING	Full MGP API access to 125+ petabyte imagery archive
RESOLUTION	30-100 cm GSD pan sharpened at nadir
IMAGE BANDS	- Full-resolution viewing and rapid download imagery is panchromatic (WorldView-1) and 3-band pan sharpened natural color (all other sensors) - 8-band VNIR and SWIR multispectral products
STEREO IMAGERY	Full access to Maxar stereo archive. Image pairs are delivered as System-ready (level 1B) with full metadata
MAXAR'S VIVID BASEMAPS	- Advanced (30 cm GSD) 3-5 m CE90 - Standard (30 cm GSD) 5 m CE90
GEOSPATIAL ACCURACY	<10m CE90 for most hosted imagery
DIGITAL ELEVATION MODEL	SRTM 2 (30 m) where available
PERSISTENT CHANGE MONITORING	- PCM Electro-optical - PCM Synthetic aperture radar
AVAILABILITY	Imagery is available within 48 hours of collection

Features & Benefits

- Highest commercially available resolution; up to 30 cm and derived 15 cm HD
- Global coverage
- Image available within 48 hrs of acquisition
- Key metadata included
- Time-lapse archive for change detection
- True color, orthorectified image strips and mosaics available for offline use
- Refresh alerts for your area of interest
- Persistent Change Monitoring (PCM)
- Full MGP API access
- Access to SWIR imagery and stereo pairs
- Access via the GIS tool of your choice
- No concurrent user restrictions

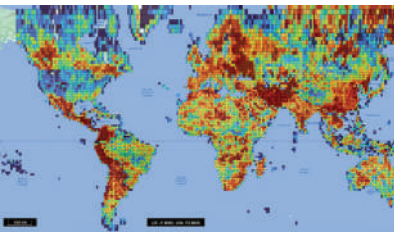
Access

- MGP APIs (including OGC)
- Web browser interface
- Esri ArcGIS, ArcGIS Pro
- QGIS

Security

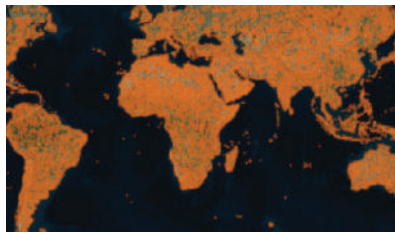
- Active prevention of SQL-Injection, cross-site scripting, DoS and DDoS attacks
- Web Application Firewall that performs deep inspection of all web traffic
- HTTPS encryption of all communication between client and server
- Multi-tiered firewall approach to ensure customer data protection
- SFTP, Aspera and AWS S3 secure downloads are supported

PERSISTENT CHANGE MONITORING

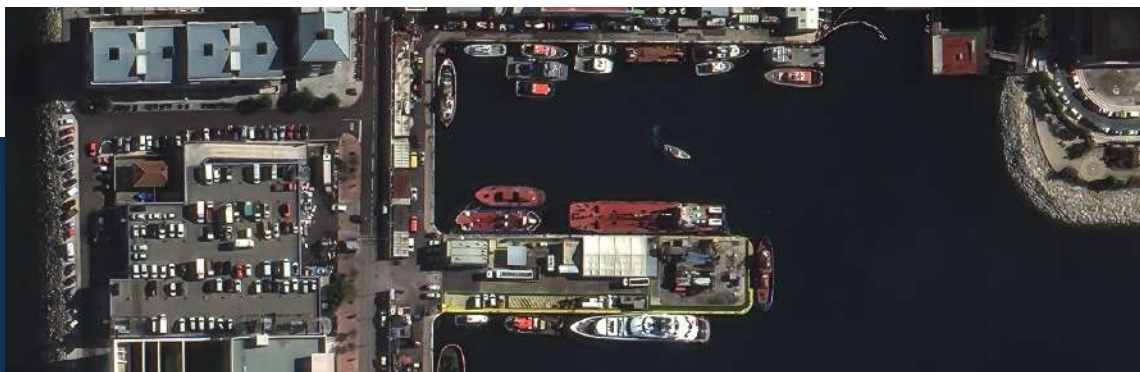


Heat map of persistent change detection densities

FRESH IMAGERY INGESTION



Six months of new imagery collections shown in orange



About European Space Imaging (EUSI)

European Space Imaging (EUSI) has led the earth observation sector in Europe for more than 20 years, providing the best Very High Resolution (VHR) satellite imagery commercially available. The first to bring 30 cm resolution satellite imagery to the European market, EUSI is firmly established as the most trusted source for efficient collection and Near Real-Time (NRT) delivery of high-quality satellite imagery products.

Through their ground station at the German Aerospace Center, EUSI continues to directly access the most advanced optical imagery satellites in the world and propel Europe into the next age of remote sensing technologies.